

Coveo Enterprise Search

Integrating CES with SharePoint 2007

Applies to CES 5 and later

This document explains how to integrate CES with *SharePoint 2007–WSS* or *MOSS*. The following lists the topics covered:

- [How to Integrate and Deploy CES with SharePoint 2007](#)
- [What Are the Rights Required to Integrate CES in SharePoint 2007](#)
- [How CES Replaces the Microsoft Search Box](#)

How to Integrate and Deploy CES with SharePoint 2007

CES is integrated with *SharePoint* using a new mechanism called *Feature*, available in *SharePoint 2007*. *Feature* basically allows *Coveo* to replace the *Microsoft SearchBox*. *Coveo* also provides basic *Web Part* that allows users to add more search functionalities to their *SharePoint* sites. The following displays a list of all the components used to integrate CES with *SharePoint*:

- Feature: CoveoNewWeb
- Feature: CoveoSearchBox
- Feature: CoveoSiteSearch
- Feature: CoveoStapling
- Feature: CoveoWebApplicationSearch
- WebPart: SearchBoxWebPart
- WebPart: GenericSearchWebPart
- WebPart: BlogAggregator
- WebPart: CommentAggregator
- WebPart: SearchInterfaceWebPart
- Assembly: Coveo.CES.Web.Search.SharePoint

When a user runs the CES install kit on a machine where *SharePoint 2007* is installed, the installation of the *SharePoint 2007 Search Interface* feature is enabled. When installed, the components listed above are also installed.

The process responsible for running the installation and deployment process is *SharePointInstaller.exe*. This executable is called during the CES installation. All the operations on the *SharePoint* farm are performed using the *SharePoint 2007* API and no direct action is performed on the *SharePoint* configuration.

In order to correctly install CES on a *SharePoint 2007* farm composed of more than one server, the CES feature–*SharePoint 2007 Search Interface*–must be installed on each server member of the farm. For more information concerning the *SharePoint* features and Web parts, refer to the [SharePoint 2007 API documentation available on MSDN](#).

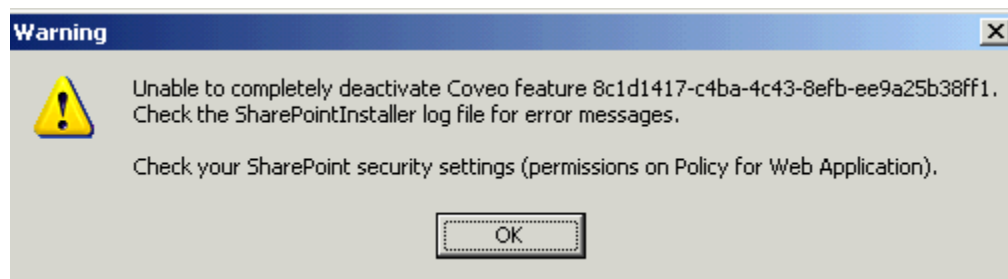
What Are the Rights Required to Integrate CES in SharePoint 2007

To install CES on a *SharePoint 2007* farm, the user performing the installation must be administrator of the farm.

Note: When a user is added to the *SharePoint Farm Administrators*, owner rights are automatically attributed for the *SharePoint Farm Configuration DataBase* on the *SQL* server hosting database for this farm. Manipulating *Features* in *SharePoint 2007* requires certain rights, and because the *Feature* installation implies deploying files on a server member of the farm, the user performing the installation must be administrator of each server of the farm.

In order to be able to activate the *Feature* in the various Web Applications, the user performing the installation must also be administrator of all the Web Application available on the *SharePoint* farm.

If the following message is displayed when uninstalling or updating, the user does not have full control on the Web Application of the *SharePoint* farm (refer to the Policy for Web Application section of the *SharePoint Central Administration*).



A good starting point is to select the same user that was used to install *SharePoint* on this server:

Microsoft names this user the *Setup User* and defines it as follows *Member of the administrator group on each Web front-end (WFE) server and application server computer in the farm. Member of the following SQL server groups with SQL Security administrator and database creator rights on SQL servers.*

Note: It is important for the user to have *Full Control* on each Web Application of the *SharePoint* farm.







How CES Replaces the Microsoft Search Box

SharePoint 2007 offers a mechanism, called *DelegateControl*, that allows the user to replace controls displayed in *SharePoint* pages. The *Microsoft* search box is in one of the *DelegateControl*. In fact, both the search box and scope selector provided by *Microsoft* are in the same delegate control, called *SmallSearchInputBox*.

To replace the controls in the *SmallSearchInputBox*, *Coveo* has created a feature called *CoveoSearchBox*, which is deployed by the install kit. This feature is activated by the *SharePointInstaller*, but can also be manually activated or deactivated in the **Site Feature** page.

[Home](#) > [Site Settings](#) > [Site Features](#)

Site Features

Name	Status
 Coveo Search Box Coveo SharePoint Integration Search Box	<input type="button" value="Deactivate"/> <input checked="" type="button" value="Active"/>
 Office SharePoint Server Enterprise Site features Features such as the business data catalog, forms services, and Excel Services, included in the Office SharePoint Server Enterprise License	<input type="button" value="Deactivate"/> <input checked="" type="button" value="Active"/>
 Office SharePoint Server Publishing Create a Web page library as well as supporting libraries to create and publish pages based on page layouts.	<input type="button" value="Deactivate"/> <input checked="" type="button" value="Active"/>
 Office SharePoint Server Standard Site features Features such as user profiles and search, included in the Office SharePoint Server Standard License	<input type="button" value="Deactivate"/> <input checked="" type="button" value="Active"/>
 Team Collaboration Lists Provides team collaboration capabilities for a site by making standard lists, such as document libraries and issues, available.	<input type="button" value="Deactivate"/> <input checked="" type="button" value="Active"/>
 Translation Management Library Create a translation management library when you want to create documents in multiple languages and manage translation tasks. Translation management libraries include a workflow to manage the translation process and provide sub-folders, file versioning, and check-in/check-out.	<input type="button" value="Deactivate"/> <input checked="" type="button" value="Active"/>