


Coveo Enterprise Search for Intranet

Front-End Integration Guide

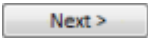
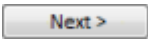
This article explains how to install the *Coveo Enterprise Search SharePoint* integration on a front-end Web server.

Installing the Search Interface on the Front-End Web Server

The user must be logged on the front-end Web server using an Administrator account for the *SharePoint* database and perform the following procedure:

1. In the appropriate folder, double-click **Coveo Enterprise Search 6 EN.exe**. The **Open File-Security Warning** dialog box is displayed.
2. Click . The first section of the installation kit is displayed.



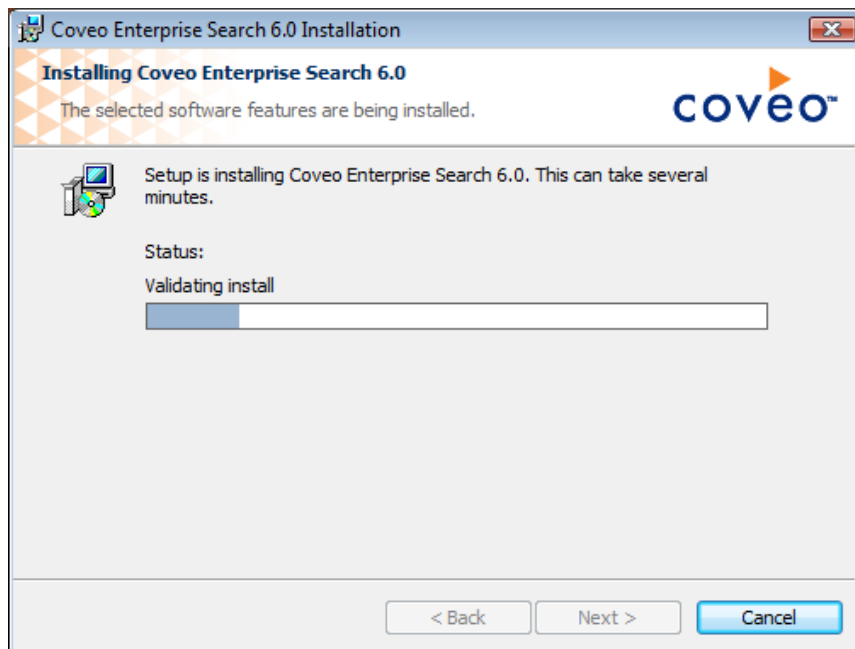
3. Click . The **License Agreement** page is displayed.
4. Read the license agreement and select **I accept the terms in the license agreement** if you agree with the terms.
5. Click . The **Choose Setup Type** page is displayed.

6. Select the **Advanced** setup by clicking . The list of advanced setups is displayed.

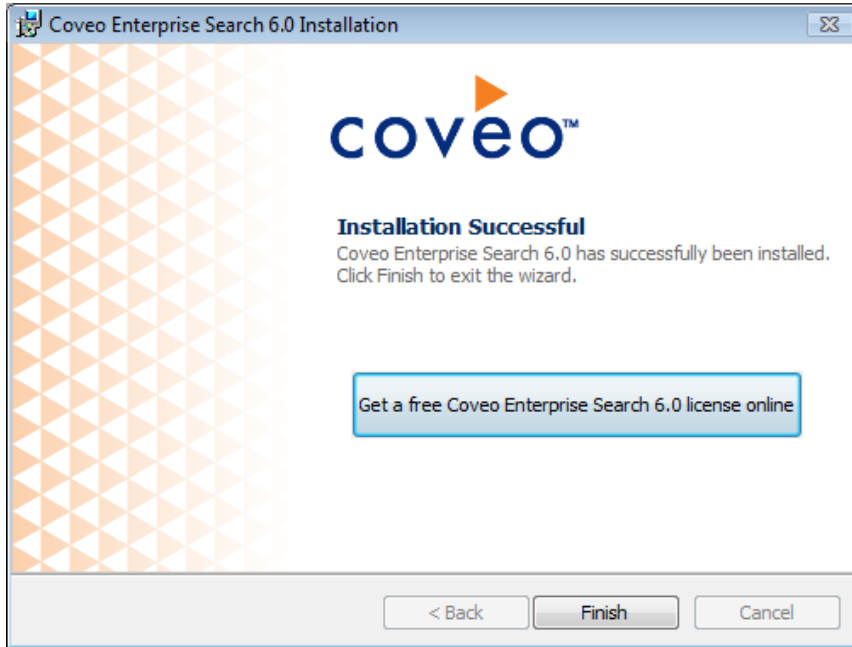
7. Select **Search Interface** and click .
8. In the **Configuration** page, click the **Configure** button corresponding to **Account used to access the files to index**.
9. Select the appropriate option, either **Create a new Web site** or **Use an existing Web site and create a new virtual directory**.

Note: For an easier administration, it is suggested to use the same Web Interface Configuration on all front-ends.

10. Click .
11. If **Create a new Web site** is selected, enter the appropriate information in the **Web site name** and **Web Site port** fields.
 - If **Use an existing Web site and create a new virtual directory** is selected, click the appropriate existing Web site and virtual directory name.
12. Click .
13. Click the **Configure** button corresponding to the Search Interface server and enter the name of the back-end server on which the CES index resides.
14. Click .
15. To begin the installation, click .



Once the installation is completed, the following page is displayed:



16. Click  .

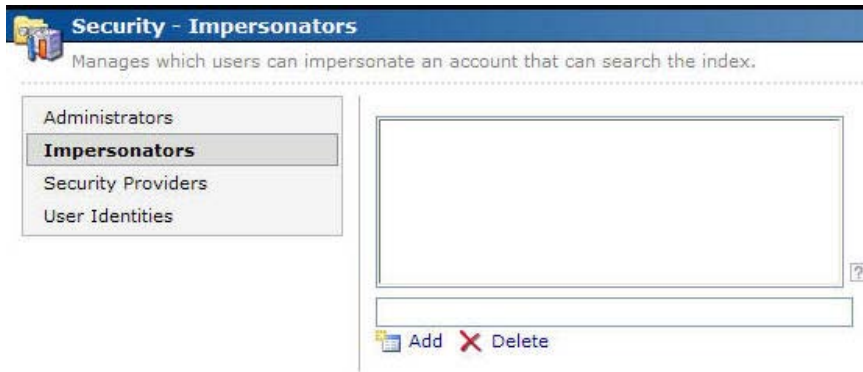
Configuring the Impersonator


In order for the Search Interface to connect to the index, it is important to configure the impersonator. The impersonator is the Application Pool identity of the CES Web site or virtual directory (depending on the option selected in the previous section).

Important: In case of a *SharePoint* integration, the users running the Application Pools of a *SharePoint* Web Applications should be specified as impersonators as well.

Note: If the Application Pool is running under Network Service, the user to specify will be `DomainName\MachineName$`. Once the account running the Application Pool is determined, perform the following procedure:

1. In the Administration Tool, access the **Security Administrators** page (Configuration > Security).
2. In the left navigation pane, click **Impersonators**.



3. Enter the name of the account running the application pool (Domain\UserName).
4. Click  . The front-end server is configured, meaning it is now possible to use the Search Interface.