



Coveo Enterprise Search 6.0

Mirror Installation Guide

Contents

Requirements.....	3
Setup.....	3
▶ Installing the Mirror with Web Interfaces.....	3
▶ Installing the Mirror without Web Interfaces.....	5
▶ Configuring the Master Index.....	7

Mirrors duplicate the index in order to obtain failover capability and increase query performances when load balancing queries between the main and mirror servers. Moreover, mirrors are synchronized with the master index server to centralize updates, meaning that modifications are first applied to the master index and then retransmitted to the mirrors. The following document explains how to create a mirror of Coveo's main server.

Requirements

- A master index installed on another server.
- A software license that includes a mirror. This license is used only on the master index. The mirror server setup does not require a license. The license of the master index allows the master server to send index data to the mirror server.
- Installation of the same build number as the master index.

Setup

The setup consists of two distinct phases:


- Installing the mirror (with or without Web interfaces): Web interfaces are required to use the mirror server directly to serve queries. However, they are not required if the user has front-end servers to hold the Web interfaces.
- Configuring the master index.

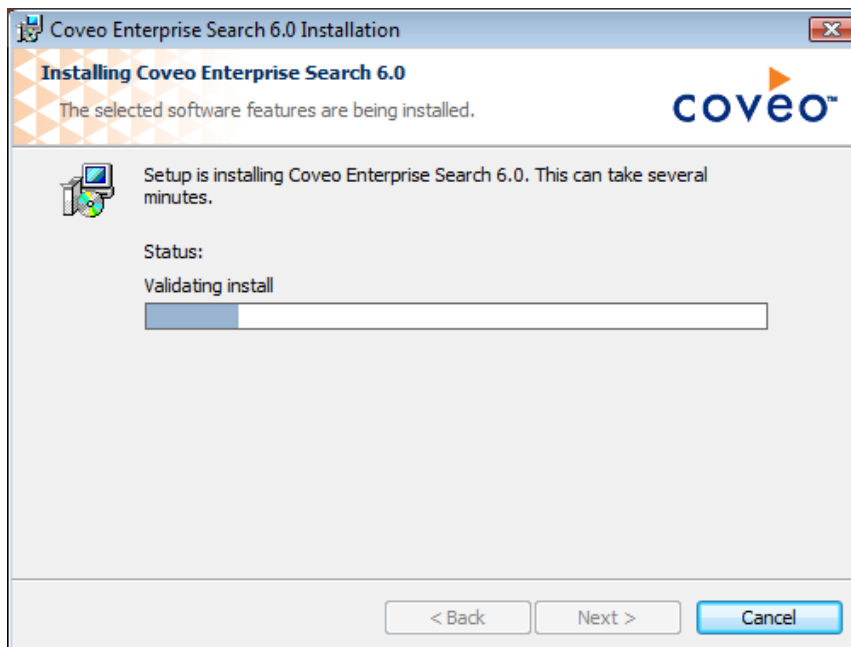
Once completed, the mirror is ready to receive index updates from the master index and perform searches. The following details the procedure for each phase.

▶ Installing the Mirror with Web Interfaces

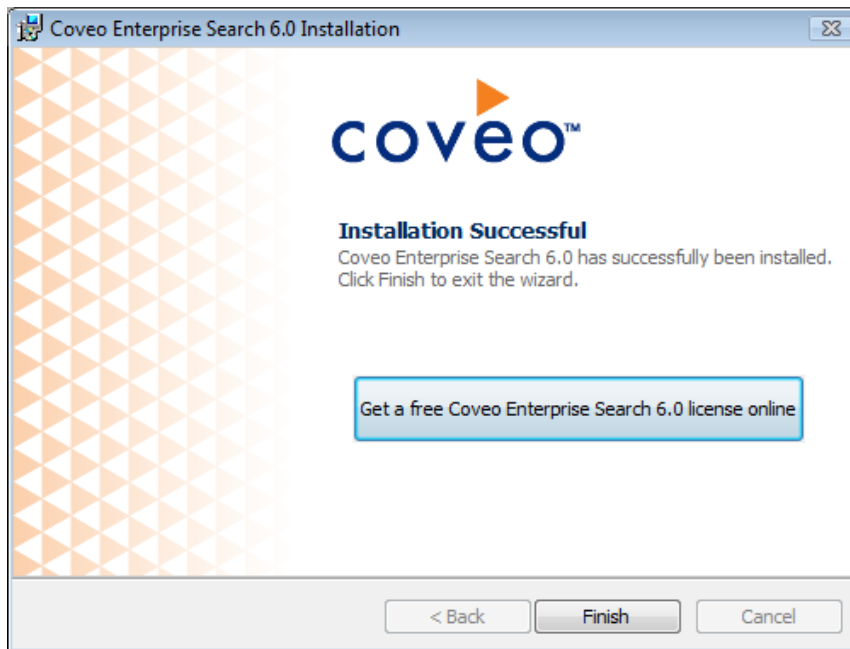
1. Log-on to the mirror server as a local administrator.
2. Launch the installation program. The **Welcome** page is displayed.



3. Click . The **License Agreement** page is displayed.
 4. Read the license agreement and select **I accept the terms in the license agreement** if you agree with the terms.
 5. Click . The **Choose Setup Type** screen is displayed.
 6. Select the **Advanced** setup by clicking . The list of advanced setups is displayed.
 7. Select **Mirror** and click .
 8. In the **Configuration** page, click the **Configure** button corresponding to **Account used to access the files to index**.
 9. Select **Use this account to index local and network files** and enter the username, password as well as domain of the appropriate account, then click .
- Important:** The account must be the same as the master index.
10. In the **Configuration** page, click the **Configure** button corresponding to **Web site hosting the interfaces**.
 11. Select the same configuration as the master index and click .
 12. If **Create a new Web site** is selected, the user is prompted to enter the appropriate Web site name and port.
 - o If **Use an existing Web site and create a new virtual directory** is selected, the user is prompted to select the existing Web site and enter a Virtual directory name.
 13. Click .
 14. In the **Configuration** page, click .
 15. To begin the installation, click .



Once the installation is completed, the following page is displayed:



16. Click ..

► **Installing the Mirror without Web Interfaces**

1. Log-on to the mirror server as a local administrator.
2. Launch the installation program. The **Welcome** page is displayed.

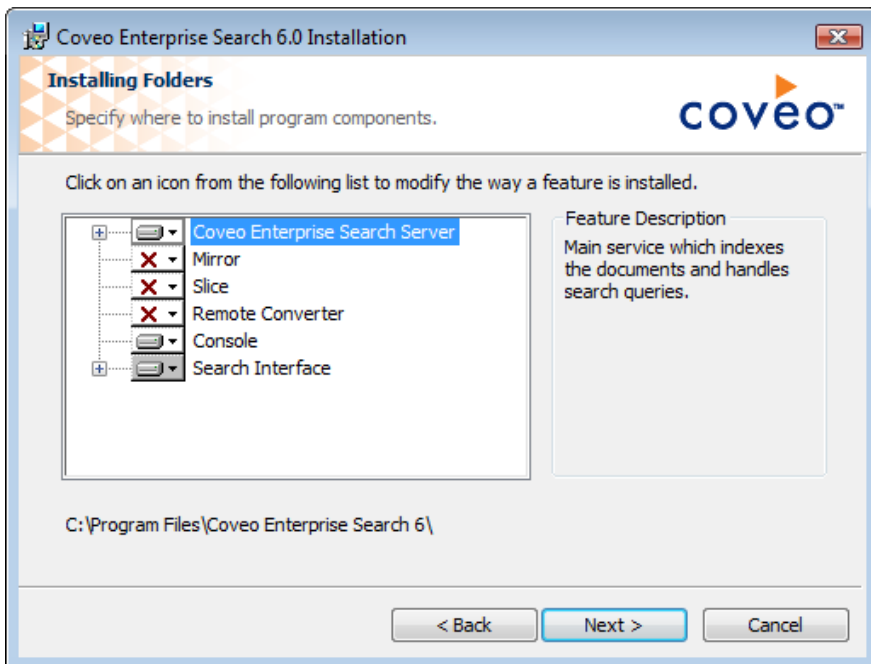


3. Click .. The **License Agreement** page is displayed.
4. Read the license agreement and select **I accept the terms in the license agreement** if you agree with the terms.

- Click . The **Choose Setup Type** screen is displayed.

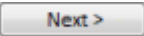
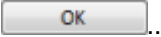


- Select the **Custom** setup by clicking . A list of advanced setups is displayed.

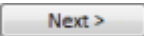



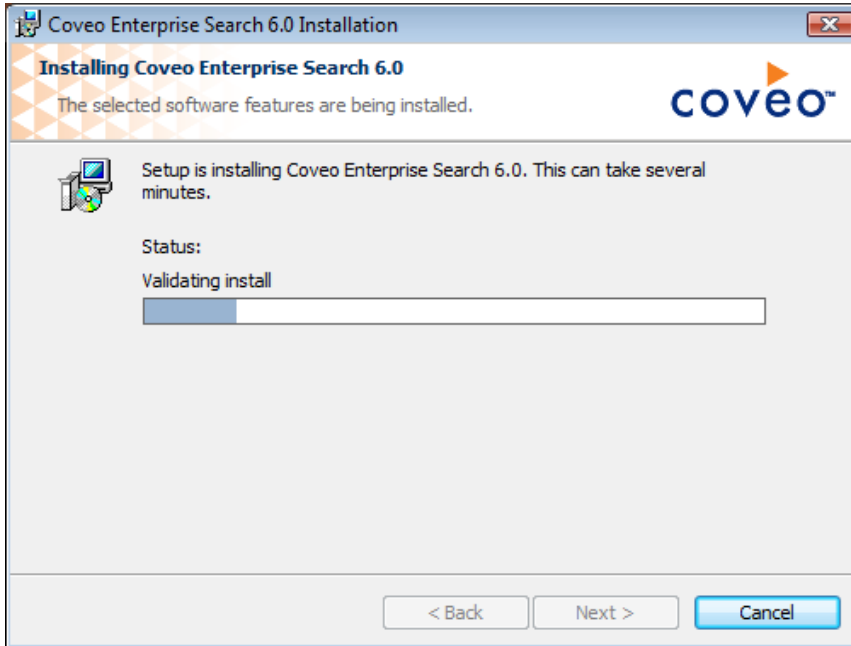
- Configure the features as follows:

Feature	Configuration
Coveo Enterprise Search Server	This feature will not be available.
Mirror	This feature will be installed on local hard drive..
Slice	This feature will not be available.
Remote Converter	This feature will be installed on local hard drive..
Console	This feature will not be available.
Search Interface	This feature will not be available.

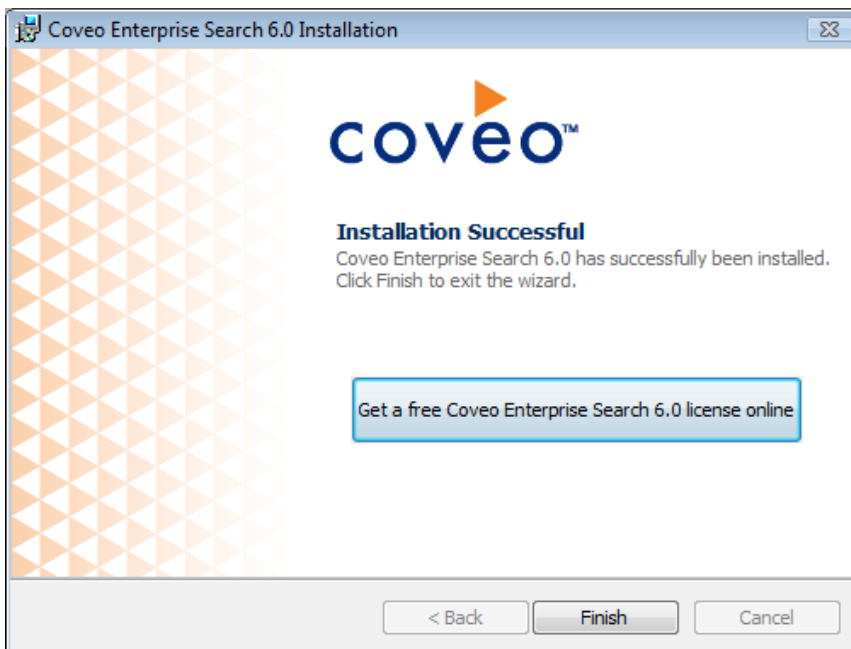
- Click .
- In the **Configuration** page, click the **Configure** button corresponding to **Account used to access the files to index**.
- Select **Use this account to index local and network files** and enter the username, password as well as domain of the appropriate account, then click .

Important: The account must be the same as the master index.

- In the **Configuration** page, click .
- To begin the installation, click .



Once the installation is completed, the following page is displayed:



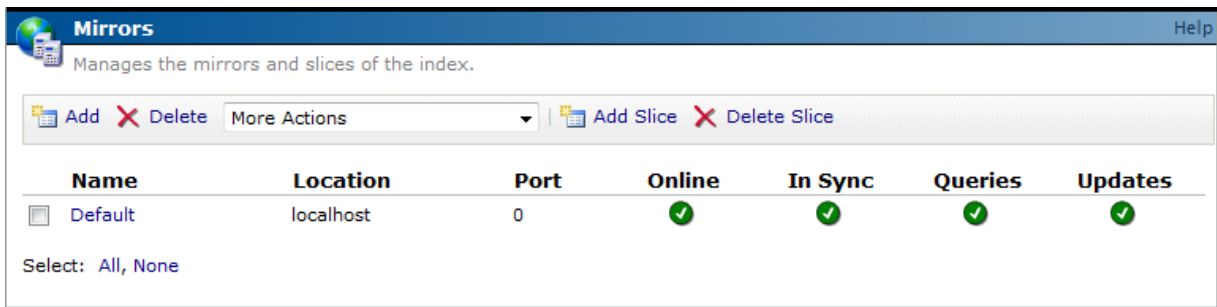
13. Click  ..

► **Configuring the Master Index**

Important: The master index must be aware of the availability of a mirror server.

1. Open the *Windows Start* menu.
2. Select **All Programs**.
3. Open the **Administration Tool** (Coveo Enterprise Search 6 > Administration Tool) of the master index. The **Overview** page is displayed.

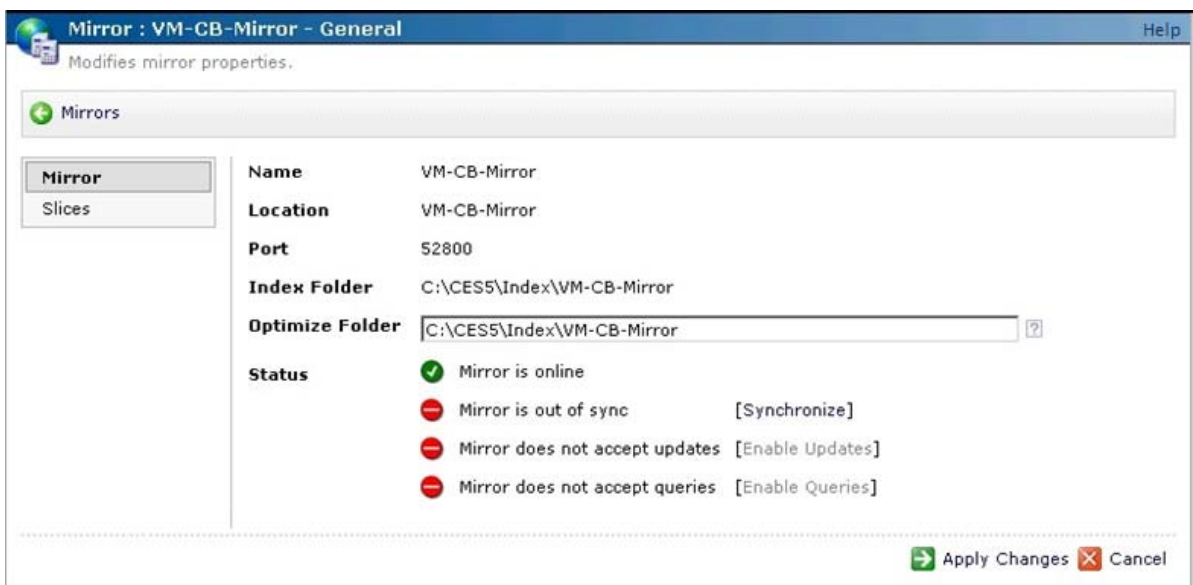
4. Access the **Mirrors** page (Index > Mirrors).



5. Click **Add**.
6. Enter the appropriate fields in the **Name** and **Location** fields.

Note: The name of the mirror server must be the same as the one specified in the **Mirror Configuration** page of the mirror setup.

7. Click **Save**.

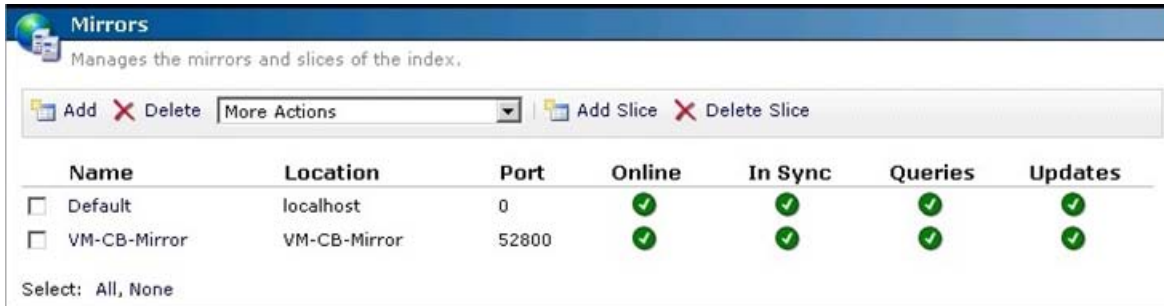


8. Click **Mirror** in the top left corner. The **Mirrors** page displays the status of the new mirror. In Sync, Queries and Updates should all have red marks.



9. Select the checkbox corresponding to the new mirror.

10. In the **More Actions** drop-down list, select **Synchronize**. The synchronization of the mirror automatically begins and the **Mirrors** page is displayed. The process can take a few minutes or up to a few hours depending on the size of the master index.
11. Refresh the browser regularly until **In Sync** is represented by a green checkmark.



Mirrors
Manages the mirrors and slices of the index.

Name	Location	Port	Online	In Sync	Queries	Updates
<input type="checkbox"/> Default	localhost	0	✓	✓	✓	✓
<input type="checkbox"/> VM-CB-Mirror	VM-CB-Mirror	52800	✓	✓	✓	✓

Select: All, None