

Coveo Enterprise Search 6.0

Lotus Notes

Features

- Secure indexing and searching of database content (*.nsf* files).
- Indexing of *Domino* Web files (other than *.nsf* files): secure search through collection or source level permissions.
- Versatile browsing of results through *Lotus Notes Client*, *Domino Web Server* or with the Quick View (HTML version).
- Integration of search function through HTML form, XML feed, Web Service or COM API.

Requirements

Hardware: *Windows 2000* or *Windows 2003* server

Windows XP and *Windows 2000 Workstation* are supported for development purposes.

Software: *Internet Information Service (IIS) 5+*

.NET Framework 2.0

MSXML 4.0 SP2

Windows Script Host (WSH) 5.5+

Lotus Notes Client 5+ (Highly recommended: *Lotus Notes Client v7*)

Network: For a secure search - *Windows Active Directory*

For a public/anonymous search - any other network

Installation

▶ CES

CES can be installed on the *Lotus Notes Server* if it is a *Windows Server*, but it is preferable to install it on a dedicated *Windows Server*.

▶ Lotus Notes Client


- Logon to the CES server with the same account used for the CES service.
- Install *Lotus Notes Client* on the CES server. Configure *Lotus Notes Client* with a *user.id* having read-access to all databases to index.
- It is preferable to test the access to the databases. With *Lotus Client Client*, open each database to index.

Configuration

▶ Lotus Notes Connector

Defines how CES initializes *Lotus Notes Client*.

Note: *user.id* and *notes.id* files can be located in the user profile folder if using *Lotus Notes Client v6.5* in multi-user setup, e.g. *C:\Documents and Settings\user\Local Settings\Application Data\Lotus\Notes\Data\...*; otherwise those files are located in *C:\Votus\notes\...* or *C:\Programs Files\Lotus\notes\...*

1. In the CES Administration Tool, access the **Web Connector** page (Configuration > Connectors).
2. In the left navigation pane, click **Lotus Notes Connector**. The **Lotus Notes Connector** page is displayed.
3. In the **Lotus Notes Client Path** field, specify where *Lotus Notes Client* is installed. For example, default value can be *C:\Program Files\Lotus\notes*.
4. The **Lotus Notes Client Initialization File Path** field can be left empty as CES tries to find *note.ini* file in its default *C:\Program Files\Lotus\notes* location. If *notes.ini* is located in a custom location, specify the path and filename to *notes.ini*.
5. The **User ID File Path** field can be left empty as CES tries to find *user.id* file in its default *C:\Program Files\Lotus\notes\data* location. If *user.id* is located in a custom location, specify the path and filename to *user.id*.
6. In the **Password** field, enter the appropriate password for the specified *user.id* to open *Lotus Notes Client*.
7. In the **Threads** field, modify the default value to troubleshoot performances.
8. Click  **Apply Changes**

▶ Lotus Notes Source


Connect to Lotus Notes Server

If you modify your connector in the CES Administration Tool or settings in *Lotus Notes Client* (*notes.ini*, *user.id*), it is important to restart the *Coveo* service.

Create a Lotus Notes Source

Create a new source that indexes a specific *Lotus Notes* database.

1. In the CES Administration Tool, access the **Sources and Collections** page (Index > Sources and Collections).
2. Create a new source with the following parameters:
 - a. **Name:** Descriptive name of the source.
 - b. **Source Type:** Lotus Notes

- c. **Addresses:** For example, [notes://server/path/databasename.nsf](#). The path must always start by *notes://* and *server* can be the server name, IP address or domain@server. The easiest way to specify the server name used in the *Lotus Notes Client* is to open the database.
 - d. Do not modify the remaining default values.
3. Click  **Save and Start**.

▶ Lotus Notes Source Syntax

The following displays a typical address:

```
notes://{dominoserver}/{databasepath}/>{viewname} {dominoserver} {dominodomain}@{server}
```

{dominodomain}: Domain specified during the *Domain Server* configuration. It is a specific *Lotus Notes* domain, i.e. it is not the *Windows NT/ActiveDirectory* domain to which the *Domino Server* belongs to. {dominodomain} is optional: if it is not used, the @ sign does not have to be used either.

{server}: Unique identifier of the server on the *Windows* network. It can be an IP, a fully qualified domain name (FQDN) or the server's name (the one commonly used on the *Windows* network).

{path}: Can have two types of values: with or without a {dominoserver}.

With **{dominoserver}**: Path to the database, preferably with the *.nsf* extension.

Without **{dominoserver}**: Path to a local database on a physical drive. Mapped drive is not supported. Databases on a network shared folder (using UNC paths) are not yet supported.

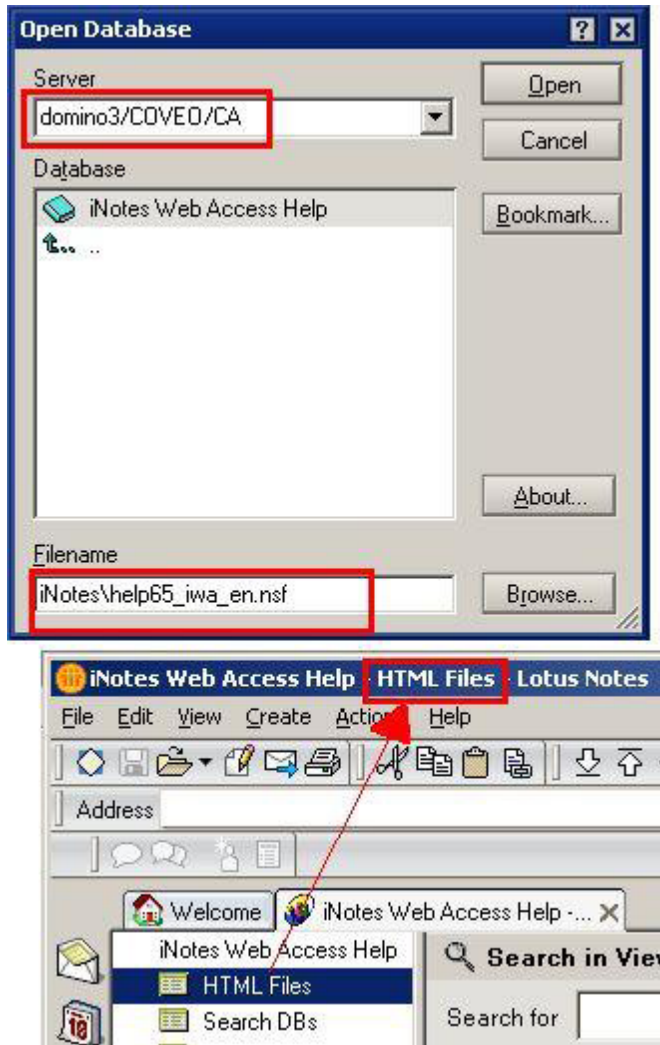
{viewname}: Specifies to index documents displayed by a specific database view (optional).

The following three examples are valid starting address:

```
- notes://corp.domain.com@ServerName/names.nsf
- notes://IPAddress/names.nsf
- notes://ServerName/name.nsf
```

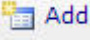
The third example uses the default domain configured in *Lotus Notes Client*. If the domain is uncertain, access *File/Database/Open/* in *Lotus Notes*. It is possible to see the exact Server Name and Domain Name in the Server field (i.e.: ServerName/*.Domain.com).

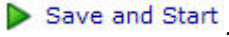
When creating the *Lotus Notes* source, the starting address must always start by *notes://server/path/database/nsf*. *server* represents the domain and organization and is followed by the @ sign and the server name. Optionally, it is possible to append **/>viewname** in order to scan only a particular view, which can help increase crawling performance. The user can refer to this information in *Lotus Notes Client* when a database is opened. The starting address for the following screenshot is: [notes://COVEO/CA@domino3/iNotes/help65_iwa_en.nsf](#) or, if appending a view name: [notes://COVEO/CA@domain3/iNotes/help65_iwa_en.nsf/>HTML Files](#).



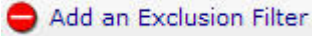

▶ **Domino Web Source**

Create a source to index *Domino* Web files. The *Domino* Web files cannot be databases. Security of this file type is handled at collection or source-level. Specifying security at collection-level blocks unauthorized users from seeing the collection (search collection checkboxes). At source-level, unauthorized users see the collection, but not the results of this source.


1. In the CES Administration Tool, access the **Sources and Collections** page (Index > Sources and Collections).
2. Create a new collection. To use collection-level security, specify **Allowed users** to a set of Active Directory; otherwise, specify *Everyone*.
3. In the **Sources** section, click . The **Add Source** page is displayed.
4. Enter the following parameters:
 - a. **Name:** Descriptive name of the source.
 - b. **Source Type:** Web Pages

- c. **Addresses:** Enter the Web address of the *Domino* Web server. The path must always start by *http://*.
 - d. Do not modify the remaining default values.
5. Click .

If database files have already been indexed with secured *Lotus Notes* sources, it is possible to exclude databases from this source by performing the following procedure:

1. In the CES Administration Tool, access the **Sources and Collections** page (Index > Sources and Collections).
2. In the **Sources** section, expand the appropriate source's drop-down list and select **Edit Filters**. The **Filters** page is displayed.
3. Click . The **Edit an Exclusion Filter** is displayed.
4. Enter the following parameters:
 - a. **Excluded Patterns:** enter ***.nsf**.
 - b. **Type:** Select **Wildcards**.
5. Click .

To add source-level security, perform the following procedure:

1. In the CES Administration Tool, access the **Sources and Collections** page (Index > Sources and Collections).
2. In the **Sources** section, expand the appropriate source's drop-down list and select **Edit Permissions**. The **Permissions** page is displayed.
3. Specify the appropriate users in the **Allowed Users** and **Denied Users**. Specified users must be Active Directory users and groups.
4. Click .

▶ Result Browsing

It is possible to configure the way users open *.nsf* database content. Results can either be opened in *Lotus Notes Client* or a Web browser when *.nsf* databases are published by a *Domino* Web server, and user preferences can be configured (note that it can be set as *mandatory*). The *Alternate Uris* preference instructs the search interface to dynamically modify the clickable address of a document. This is done by the means of a wildcard pattern and replacement string.

1. Open the Search Interface (*Windows Start* menu > All Programs > Coveo Enterprise Search 6 > Search Interface).
2. Click **Edit this Interface** (only Coveo administrators can see it).
3. Click **Alternate Uris**.
4. Click **Add New** and enter the following parameters:
 - a. **Description:** Descriptive name of the source.

- b. **Uri Pattern:** Address pattern to modify. The path must always start by *notes://servername* and can optionally be followed by the path.
- c. **Replacement:** String that replaces the Uri Pattern. The path must always start by *notes://servername* and can optionally be followed by the path.
- d. **Mandatory:** Selected if the administrator does not want users to be able to disable it.

Troubleshooting

▶ Cannot Initialize Lotus Notes Client

- Validate the *Lotus Notes* connector settings.
- Specify *notes.ini* and *user.id* file paths.
- Stop CES
- Start CES

▶ The Address is Invalid

- Re-enter the password to make sure it was entered correctly.
- Verify whether the database can be opened through *Lotus Notes Client* or not, using the same *user.id* and password as the *Lotus Notes* connector settings.
- Verify whether the server name used in *Address* is valid or not, i.e. can be opened through *Lotus Notes Client*, using the same *user.id* and password as in the *Lotus Notes* connector settings.
- Modify the *User ID File Path* to the proper *user.id* file path. The filename is required in the path, for example *C:\Program Files\lotus\notes\data\user.id*.
- Stop the service.
- Start the *Coveo Enterprise Search 6* service (*Windows Start* menu > All Programs > Coveo Enterprise Search 6 > Service).
- Create the source.

▶ Is the Source actually Indexing?

- Verify whether the CES Console is displaying activity (*Windows Start* menu > All Programs > Coveo Enterprise Search 6 > Console).
- If not, rebuild the source and verify the CES Console for error messages.