

Coveo Enterprise Search

How to Install CES on Windows Vista or Windows Server 2008

Applies to CES 5 and later

This article explains how to install CES 5 on *Windows Vista* or *Windows Server 2008*. It is assumed that *Internet Information Services 7* is installed.

With the release of *Windows Vista* and *Windows Server 2008*, *Microsoft* has introduced two new technologies that have an impact on *Coveo Enterprise Search*: *User Account Control (UAC)* and *Internet Information Services (IIS) 7*.

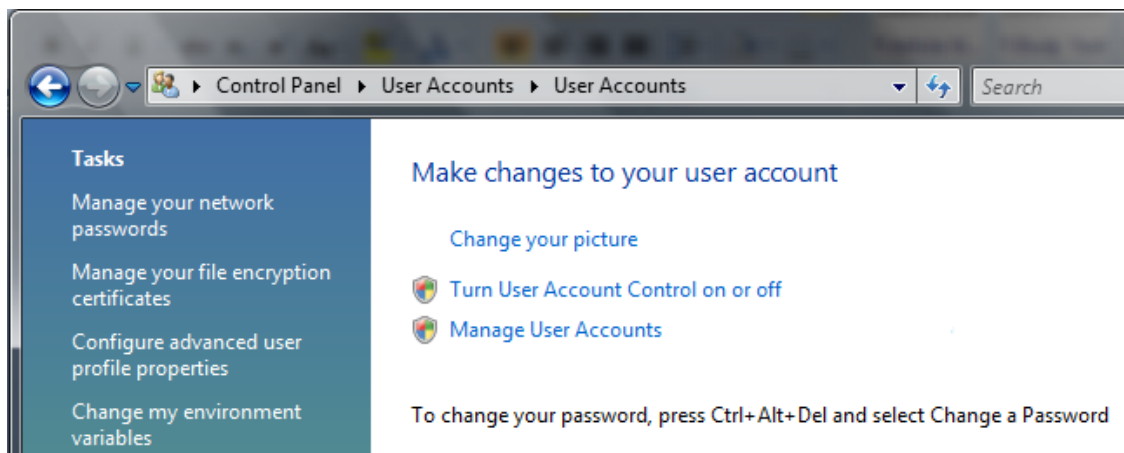
Important: When the installation kit is launched, CES 6 now automatically installs Internet Information Services (IIS) and *.NET Framework* with the all the appropriate options on all supported versions of *Windows* (if they are not already installed). This facilitates the deployment of CES on *Windows 2008 Server* as well as on other *Windows* versions. If CES 6 is installed, skip the [Internet Information Services 7](#) section.

User Account Control

The UAC requires all users to run applications and tasks with a standard user account, limiting administrator-level access to authorized processes. It also allows desktops to be locked down, which stops unauthorized applications from installing and stops standard users from making inadvertent modifications to system settings. This changes the way *Coveo Enterprise Search* is installed, as administrator-level privileges are required during the process. Hence, it is important to disable UAC before installing CES.

▶ To Disable User Account Control

1. Access the Control Panel (*Windows Start* button > Control Panel).
2. In the left menu, click **Control Panel Home**.
3. Click **User Accounts**.
4. Click **user Accounts**.



5. Click **Turn User Account Control on or off**.

Internet Information Services 7

The default features installed with IIS 7 are minimal and they do not allow *Coveo Enterprise Search* to run properly. Simple steps are required to install those features.

▶ Install required IIS features

1. Access the **Control Panel** (*Windows Start* button > Control Panel).
2. Double-click **Programs and Features**.
3. In the left navigation pane, click **Turn Windows features on or off**. The **Windows Features** window is displayed.

Note: If you are prompted for an administrator password or confirmation, enter the appropriate information.

For *Windows Vista*, select the following features:

- Internet Information Services > Web Management Tools > IIS 6 Management Compatibility > IIS Metabase and IIS 6 configuration compatibility;
- Internet Information Services > World Wide Web Services > Application Development Features > ASP.NET;
- Internet Information Services > World Wide Web Services > Security > Windows Authentication;
- Internet Information Services > World Wide Web Services > Common Http Features > Static Content;
- Internet Information Services > World Wide Web Services > Security > Basic Authentication.

For *Windows Server 2008*, in the left navigation pane of the **Server Manager**, expand **Roles** and click **WebServer (IIS)**. In the display pane, click **Add Role Services**. Select the following features:

- Internet Information Services > Web Management Tools > IIS 6 Management Compatibility > IIS Metabase and IIS 6 configuration compatibility;
 - Internet Information Services > World Wide Web Services > Security > Windows Authentication;
 - Internet Information Services > World Wide Web Services > Security > Basic Authentication;
 - Internet Information Services > Application Development > ASP.NET. *Windows Server 2008* may ask to add required features for *ASP.NET*; if so, click **Add Required Role Services**.
4. Click **Next**, then **Install**.
 5. In the left navigation pane of the **Server Manager**, right-click **Features**. Select **Add Features**, then **Desktop Experience**.

▶ Install Coveo Enterprise Search

You can perform the installation using a command prompt or the standard user interface. In either case, the user must be part of the Administrator group on the computer.

Command Prompt

1. Click the *Windows Start* button > All Programs > Accessories.
2. Right-click **Command Prompt**, then click **Run as administrator**.

3. In the **Administrator: Command Prompt** window, run the installation kit using *msiexec.exe*, as you would have done on a previous version of the *Windows OS*.

User Interface

The administrator must right-click *Coveo Enterprise Search 5.0 (self-extracting archive).exe*, then click **Run**. By doing so, the files are extracted from the self-extracting archive and the installation is launched with elevated privileges.

Note: One of the extracted files is named *Setup Coveo Enterprise Search 5.0.exe*. It is possible to use it to re-run the installation without extracting the archive. It should be started using the *Run as administrator* shortcut.

Remarks

To repair or uninstall *Coveo Enterprise Search 5*, start the process with administrator privileges. This cannot be done in the **Programs and Features** window (*Control Panel > Programs and Features*); it must be done using the Command Prompt or the *Setup Coveo Enterprise Search 5.0.exe* file.