

## Coveo Enterprise Email Search

### A new paradigm in enterprise search

Unified, cross-enterprise search of emails and attachments regardless of where they are stored:

- ▶ Offline – in all employees’ desktops
- ▶ Online – in live email servers and email archives
- ▶ Even in hosted email platforms

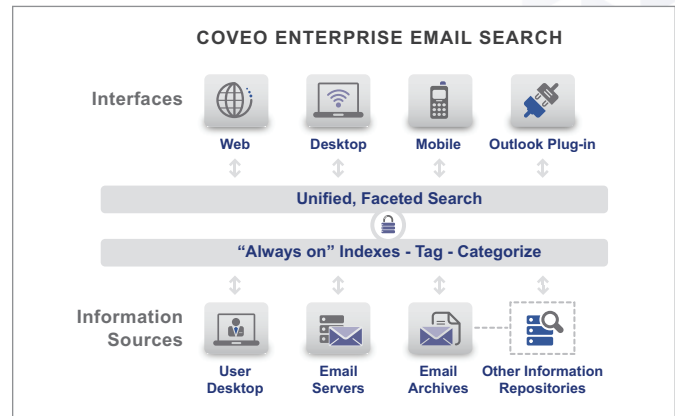
### Ensure knowledge continuity, productivity and reduce the risks associated with email communication and storage

The Coveo Enterprise Email Search application provides an investigation-ready, central index of all company-wide email content, including archives and desktop PST files, and administrator-assignable, permission-based search across multiple email accounts ensuring:

- ▶ Knowledge continuity when employees leave the company, helping preserve access to their ongoing projects, customer relationships and accumulated knowledge
- ▶ Increased productivity as employees find important information faster, saving time better spent on innovation and customer relationships, as well as reducing redundant work
- ▶ Improved compliance and reduced risk – via alerts and tighter controls on transmission of sensitive information and intellectual property, as well as facilitation of investigations that require discovery of email interactions

### Quickly deploy to meet both today’s needs, as well as future requirements, with the modular, scalable Coveo Enterprise Search 6.1 platform

- ▶ Deployment in hours or days, not months – resulting in rapid ROI, often in as little as a few weeks or months
- ▶ Complete, integrated security means information is only accessible with appropriate access rights
- ▶ Additional Coveo connectors easily expand access to other enterprise information repositories – ensuring your investment can easily adapt to support future requirements
- ▶ Self-service customization requires minimal investment to tailor interfaces and results to your needs



Coveo Enterprise Email Search helps you discover the undiscoverable: email and attachments residing on the desktops and laptops of all employees, combined in a unified search with live servers and email archives

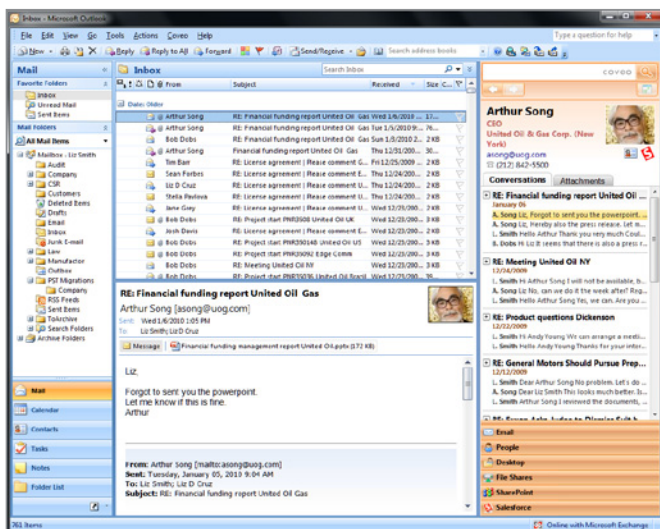
- ▶ Index billions of documents (up to 50M docs/server), requiring as much as 70% less server footprint than competing solutions – providing the lowest industry TCO
- ▶ Dynamic reporting capabilities put relevant, visual information at the fingertips of business stakeholders

### Index, search and rapidly pinpoint precise content in enterprise-wide email

- ▶ Employees locate precise content in emails and attachments up to 10x faster
- ▶ Reduce risk and maintenance associated with email storage locations (live server, archive, PST) and the challenges of multiple interfaces to locate information
  - Indexing, tagging and categorization of all emails from live email servers, email archives or desktop PST files
  - Intuitive, unified search seamlessly returns results from all enterprise-wide email and other enterprise systems when combined with additional connectors

## Intuitive interfaces provide productivity-enhancing access to information – anywhere, anytime

- ▶ Eliminate the need to sort, file and categorize email
- ▶ Access information in email whether in the office or in the field, even when laptops are offline
  - Integrated Outlook Sidebar lets employees access information in email, attachments and other content sources seamlessly, right where they work
  - Additional intuitive interfaces include web (browser-based), desktop and mobile search bars
  - Faceted navigation, including sender, recipient, attachment type, mail folder, etc.
  - At-a-glance context displays the first few lines of an email



- Quickview to view emails and attachments without launching another application
- Related email conversations are automatically grouped together in search results, providing a logical view of extended email conversations
- Live-indexing provides continuous, up-to-date information in search results

## Easily leverage the knowledge and relationship information stored in email systems while ensuring compliance and protecting sensitive information

- ▶ Retain institutional knowledge, customer relationships and “goodwill capital” when employees leave
- ▶ Easily share knowledge, especially for remote and virtual workers
- ▶ Reduce compliance risks and protect intellectual property
  - Permission-based access allows searching multiple mailboxes, including former employees’ emails, and facilitates investigations
  - Alerts on transmission of sensitive information and non-compliant activities

## To Coveo, risk is a four-letter word

We will work with you to provide a free, rapid proof-of-concept on your company’s live data, enabling you to test and use Coveo Enterprise Email Search before investing significant time or money — eliminating the risk from your purchase decision.

### Recommended Software & Hardware

- CPU: dual 2.0 Ghz or faster processors
- RAM: 4 GB or more
- 150 MB disk space for Coveo  
Disk space for the search index varies based on the size of the original documents. Rule-of-thumb: allow for 50% of the size of the original documents (e.g., 1 million documents can take ~40GB disk)
- Microsoft Windows Server 2003 or 2008
- .NET Framework 3.5 or later
- Microsoft Internet Explorer 6.0 or higher, Mozilla Firefox 2 or higher
- Microsoft Windows XP or later (desktop search interface)

### Select Supported Repositories:

- Microsoft Exchange
- IBM Lotus Notes
- Symantec Enterprise Vault
- Quest Archive Manager

### Mobile Interface support:

- BlackBerry
- Windows Mobile

**Chicago, Illinois**  
945 Lakeview Parkway  
Vernon Hills, IL 60061 USA  
T: 1 800 635-5476

**Québec, Québec**  
2800 St-Jean-Baptiste Ave., Suite 212  
Québec, QC G2E 6J5 Canada  
T: 418 263-1111