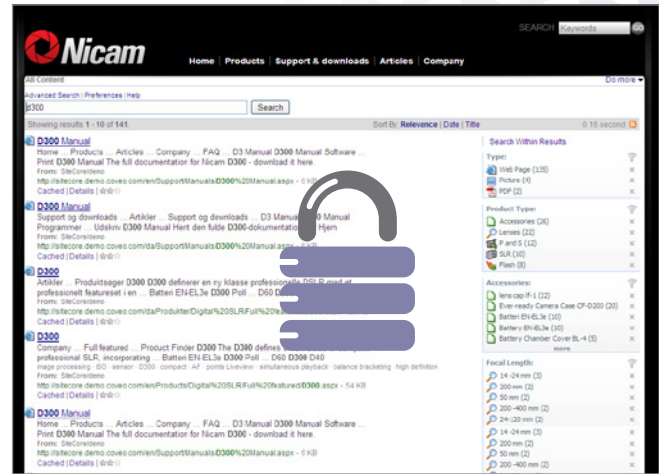


## Advanced Search and Navigation for Sitecore CMS

**Optimize User Experience, Make Content More Findable, Drive a Greater Return on Investment in Sitecore Deployments.**

Coveo provides you with a highly configurable Enterprise Search 2.0 platform and a best-in-class Sitecore CMS connector that fully leverage Sitecore features, deploy rapidly, and open up numerous opportunities for leveraging content in Sitecore more effectively. Key features include:

- ▶ **API-level integration** – Provides richer indexing than traditional web crawling of meta-data, such as webpage fields, time stamps, authors and document properties. Also enables automated, near-real time indexing of new or changed content to ensure freshness
- ▶ **Faceted Search and Navigation** – Offers users a more intuitive, stickier web experience, complementing traditional keyword searches with guided navigation and conversational search that leverages meta-data for increased relevance and precision
- ▶ **SmartFacets™** – These configurable facets are ideal for an eCommerce website, providing dynamic calculations of relevant product information such as average or summed prices, as well as filtering by price ranges
- ▶ **Full integration with Sitecore Security** – Robust searching on password-protected content with complex multi-user, role-based scenarios
- ▶ **Site Personalization and Composite Views** – Create a personalized user experience with composite views that combine relevant site content with content indexed from any corporate system outside the CMS (Community, Intranet, CRM, Business Social Media) including both structured and unstructured data, even video clips



Coveo Enterprise Search 2.0 integrates seamlessly with Sitecore security while enabling relevant, user-friendly search.

- ▶ **Administrator search** – Sitecore administrators, internal authors and contributors can easily search through all content stored inside the Sitecore platform, published or not, increasing the visibility and re-use of existing content, and decreasing duplication of effort

“Coveo’s Enterprise Search 2.0 Platform provides a robust, extensible architecture that encourages its use in Enterprise web systems – we see it as an integral tool in our web presence solution set. Coveo’s Professional Services team was extremely helpful in supporting our efforts to think outside the box and create a truly unique user experience for many of our clients. We’re looking forward to introducing many more creative uses of the technology in upcoming projects.”

Dustin Collis, Managing Director  
Technology Solutions



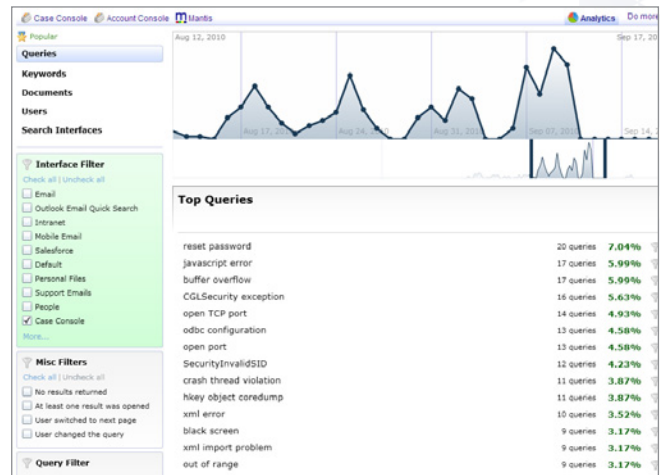
► **Search Analytics** – Provides valuable information about visitor search behavior, content usage (top queries) and gaps in content (unsuccessful queries). Together with Sitecore OMS, it offers a comprehensive, 360-degree view of website activity, offering unparalleled insights into key trends and more agile decision-making

### Help Harvest your Knowledge Ecosystem with Coveo

Coveo is the ideal platform to expand beyond initial web content projects, as your needs evolve, by leveraging the extensibility of Coveo's Enterprise Search 2.0 platform to access additional content sources.

Coveo technology is non-disruptive and quickly allows companies to gain greater, consolidated access to content that is scattered across departments and silos, in many cases duplicated.

The Coveo platform's unified index enables companies to create actionable knowledge from information accumulated across disparate enterprise data sources.



Extend Sitecore OMS with optional search analytics, based on visitor search behavior, that help identify trends including content usage (top queries) and gaps in content.

### Sitecore CMS Customers Using the Coveo Enterprise Search 2.0 Platform to Power their Search Experience Include:



For more information, contact Coveo

www.coveo.com ► 1.800.635.5476 ► partners@coveo.com