

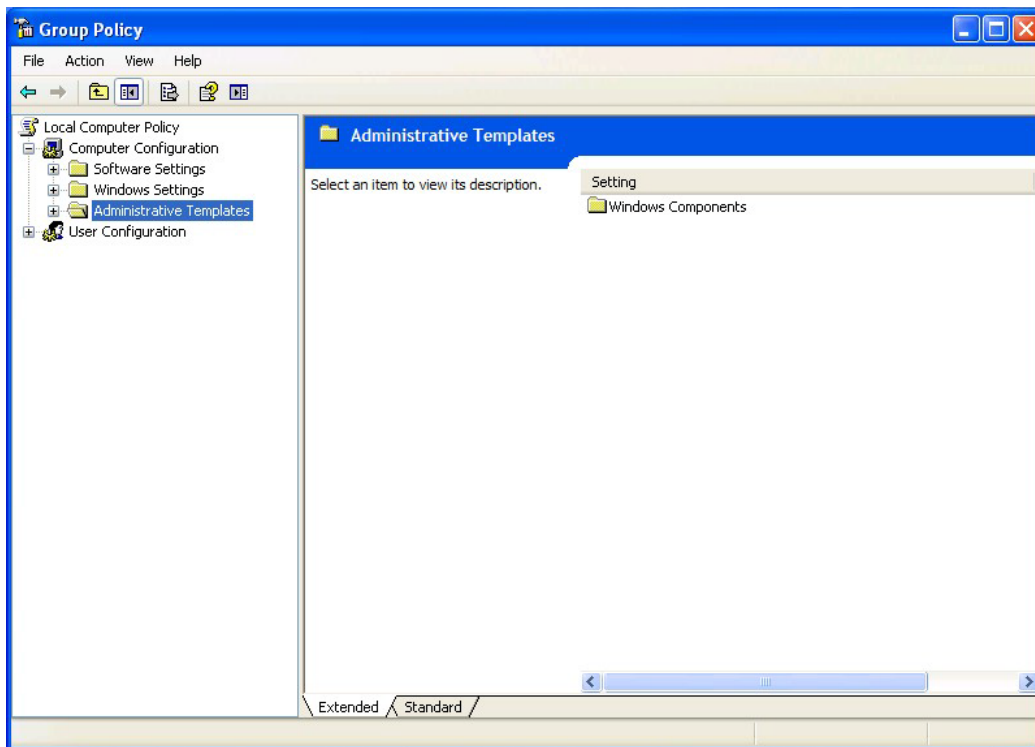
# Coveo Enterprise Search

## How to Integrate CES with Windows Desktop Search

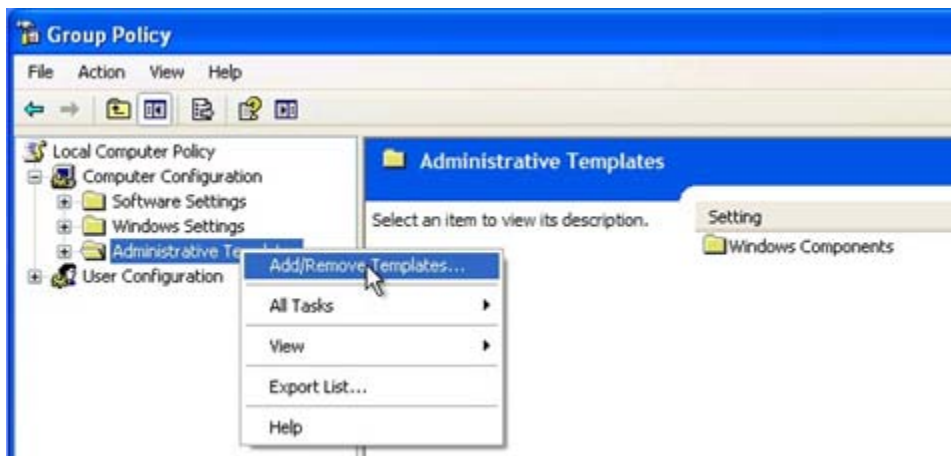
Applies to CES 5 and later

It is possible to add a tab in Windows Desktop Search which links to CES search and opens a browser with the query. The following details the procedure required for the integration to work properly:

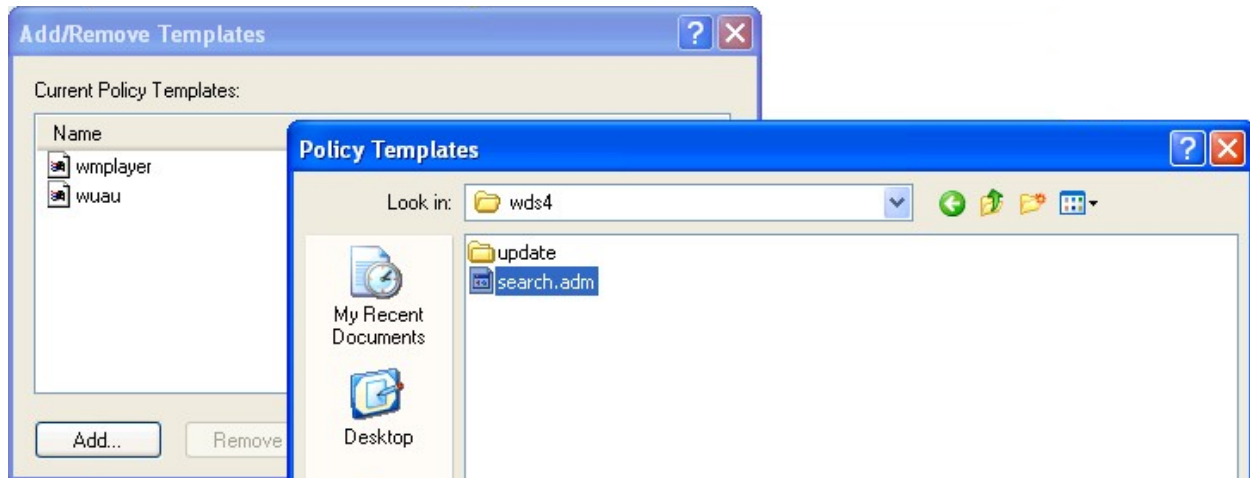
1. Install version 3.01 or later of WDS.
2. Open MMC and add the Group Policy Editor Snap in.



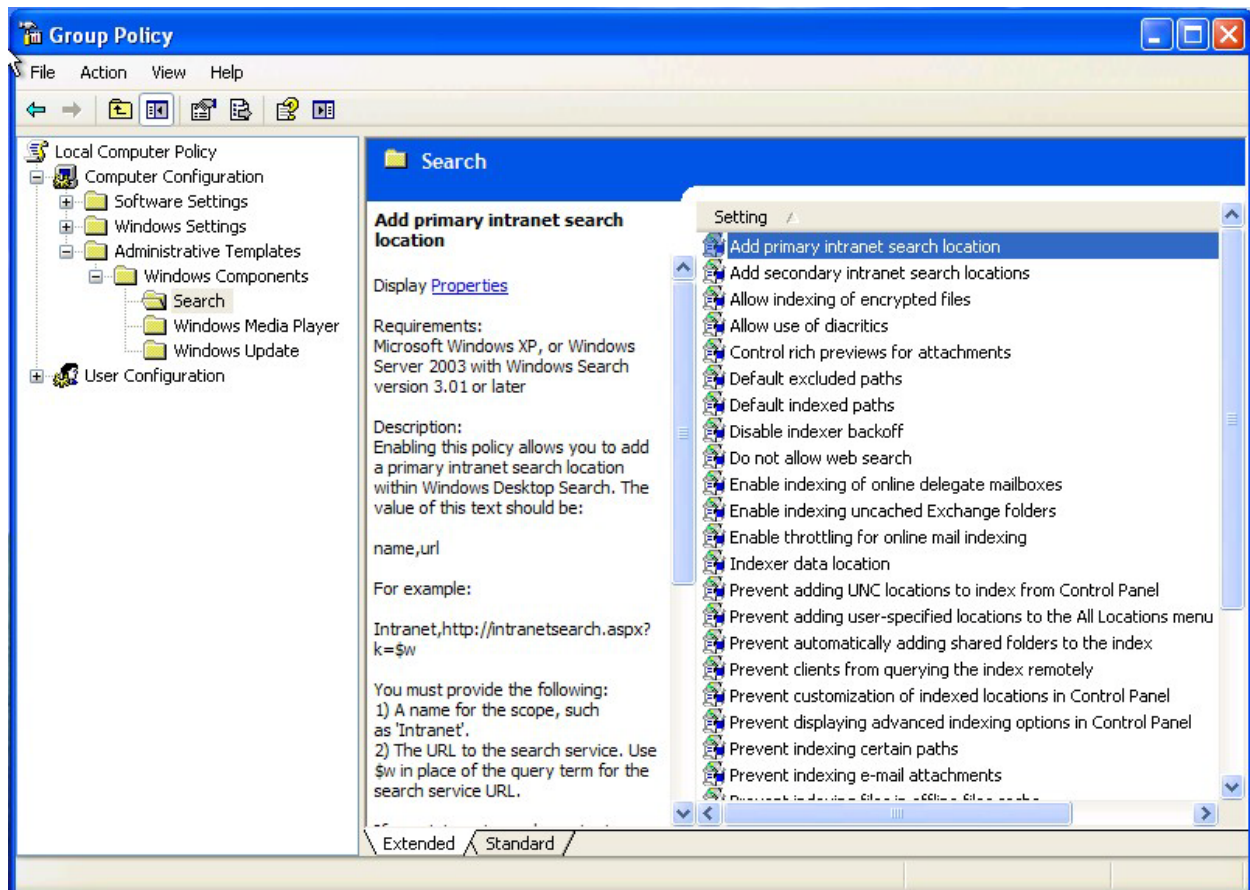
3. Expand **Computer Configuration** and right-click **Administrative Templates**.



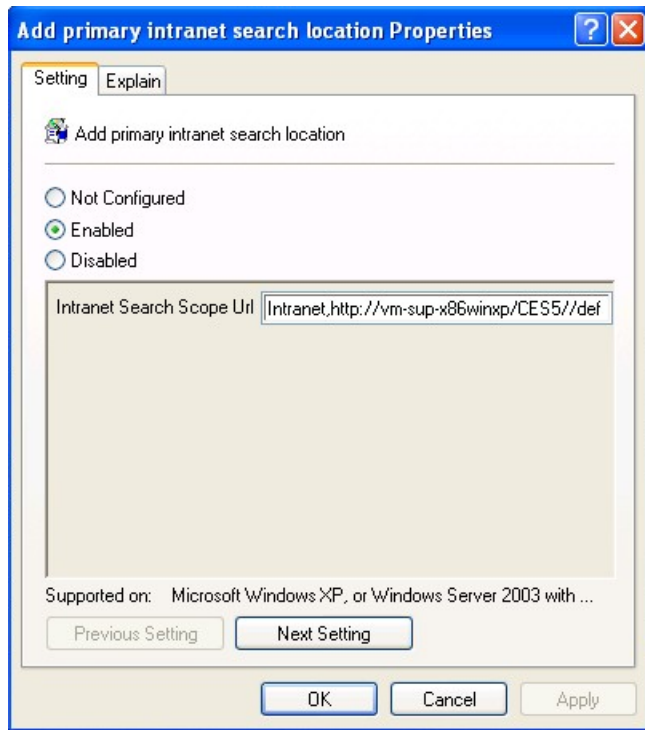
4. Select **Add/Remove Templates...** and select *search.adm*.



5. In the Group Policy Editor, expand **Administrative Templates > Windows Components > Search**.



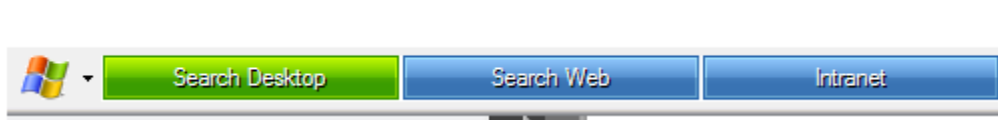
6. Double-click **Add primary intranet search location**.



7. Select **Enabled** and enter *Intranet,http://intranet2/\_layouts/CES/Search2007.aspx?&q=\$w* in **Intranet Search Scope Url**.

8. Click .

After that, the deskbar should look like this:



**Note:** The user might have to reboot in order for the integration to work.