



Coveo Expresso™ *Beta* brings enterprise-class, advanced information access to your small/medium business or corporate department – *with up to 50 users, 1 million email items and 100,000 documents at no cost.*

Coveo Expresso™ *Beta* bolsters productivity by reducing the time employees spend searching, gathering and recreating information, which, according to studies, consumes more than 20% of their time – for 50 employees, as much as \$500,000 of productivity gained annually.

With Coveo Expresso™ *Beta*, IT departments can meet these challenges quickly and easily. Coveo Expresso™ *Beta* is easy to download, configure and deploy to meet the information access needs of small/medium businesses and corporate departments – in less than an hour.

With Coveo Expresso™ *Beta*, employees more easily find the right information, faster, no matter where the information is stored – online in email, SharePoint or file shares, or offline in local PST and desktop files. Employees get the information they need, now, @ the speed of business.

The free Coveo Expresso™ *Beta* starter package includes information access for:

50 users – with licenses for:

- ▶ 50 PCs/laptops
- ▶ 50 email accounts with up to 1 million emails, attachments and desktop files
- ▶ 50 mobile users via BlackBerry
- ▶ 50 Outlook™ Sidebar clients
- ▶ 50 Enterprise Desktop Search clients

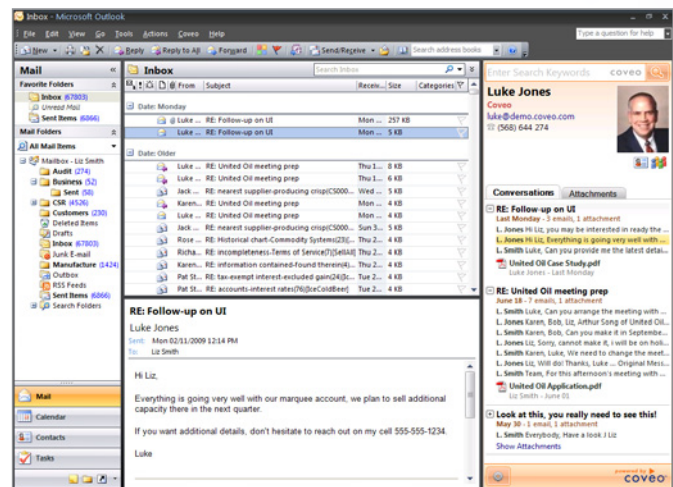
50 users – that’s enough to provide advanced enterprise search for over 5 million small businesses (under 50 people) in the U.S. alone – or to get started within a larger enterprise.

100,000 documents indexed

- ▶ 50,000 in SharePoint
- ▶ 50,000 in file shares

100,000 documents – that’s enough to support a small business – even a department of a larger enterprise.

With Coveo Expresso™ *Beta*, end users search any way they like, from a variety of intuitive interfaces

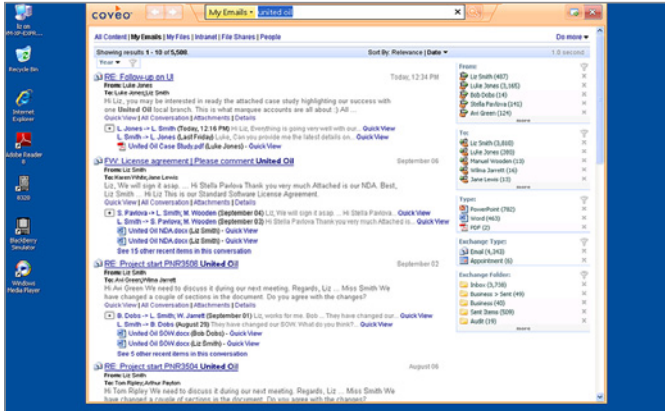


Coveo’s Outlook™ Sidebar, for knowledge workers who “live” in their email

- ▶ Contextual view of conversations, attachments and people related to the email selected by the user.
- ▶ Includes a search box for quick access to search all content, with guided navigation through information facets.
- ▶ Content alerts that allow users to monitor when sought after information is updated or added.

Intuitive, web-based user interface

- ▶ Allows users to search from their favorite browser, from any PC or laptop.



Additional features include:

- ▶ An intuitive administrator portal that provides easy access to configuration details, one-click user provisioning, as well as usage monitoring.
- ▶ Highly accurate, relevant search results that include:
 - interactive ranking – automatically adjusting results ranking according to user behavior.
 - automatic grouping of related email conversations.
 - context summaries of emails and documents.
 - document Quickviews provide a preview without launching another application.

Unique Desktop Floating Search Bar

- ▶ “Floats” above any open application, allowing users to search from anywhere in Microsoft Windows.



Coveo’s Mobile Access, including

- ▶ The Coveo BlackBerry MIDlet, a light-weight optimized version of the web UI, that allows users to conduct secure searches within enterprise content directly from their BlackBerry, including guided navigation.

System Requirements

Server Environment

Hardware:

- Dual 2.0 GHz or better processors or a Virtual Machine (VM) with two cores (supported virtualization: VMWare, Microsoft Hyper-V)
- 1.5 GB of RAM
- 150 MB disk space to install Coveo Expresso™ Beta
- Disk space for the search index varies based on the size of the original documents. Rule-of-thumb: allow for 50% of the size of the original documents

Software:

- Microsoft Windows Server 2003 or 2008, Vista or Windows 7, along with administrative rights to the server
- .NET Framework 3.5 or later

- To index emails: Exchange 2003 or 2007, and an account with the appropriate rights to read the mailboxes to index
- Microsoft Internet Explorer 6.0 or higher, Mozilla Firefox 2 or higher
- Connection to the Internet through HTTPS
- The server must be on a Windows Server domain

End-User Environment

The Desktop Integration Package requires:

- Microsoft Internet Explorer 6.0 or higher, Mozilla Firefox 2 or higher, Google Chrome 2.0 or higher
- Outlook 2003 or Outlook 2007
- Windows XP, Vista or Windows 7
- .NET Framework 3.5 or higher